



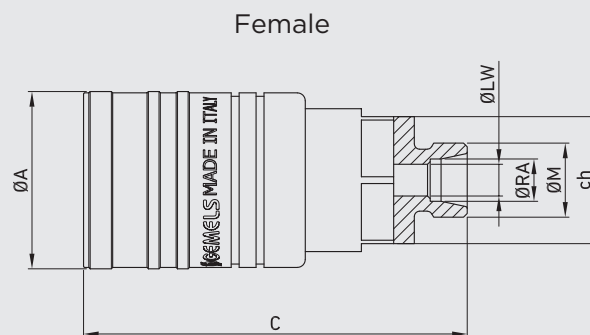
# PUSH-PULL NV

ISO 7241/A PUSH-PULL POPPET  
ISO 5675 NV

Edition. 21.1

## CS Carbon Steel

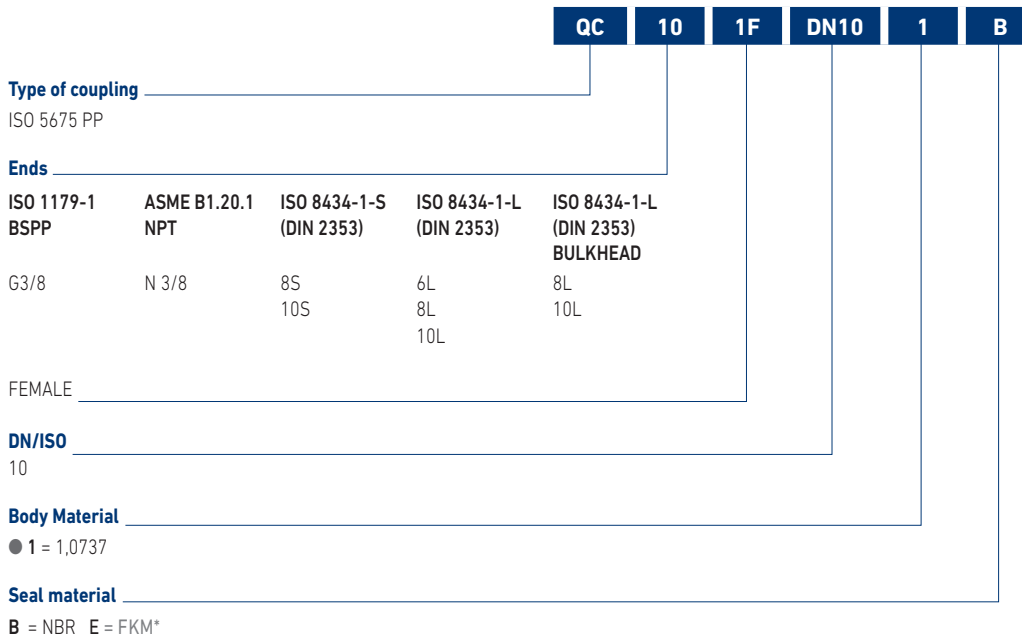
- Type: Quick Couplings
- Models: ISO 7241/A  
PUSH-PULL POPPET  
ISO 5675 NV
- Sizes: from DN10-DN13
- Pressure: up to PN420
- Treatment: Galvanized



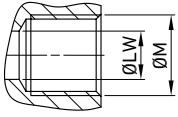
Available also  
in patented version:  
ball valve with integrated  
quick coupling.



## CODE DESCRIPTION STRUCTURE



\*On request  
• Plugs

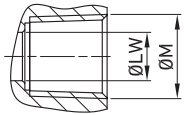


Male type see ISO 5675

### QUICK COUPLINGS PUSH-PULL ISO 5675 (female) FEMALE THREAD ISO 1179-1 BSPP

TYPE	DN	PN		ØA	C	Ød	ch	ØM	WEIGHT		ITEM CODE	
		MPa	42						mm	33,5		68
QC PP NV G 3/8 FEMALE	10	Psi	6090	inch	1,32	2,68	-	0,94	G3/8	lb	0,58	NC34G020000

CS  
Carbon  
Steel

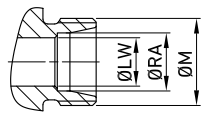


Male type see ISO 5675

### QUICK COUPLINGS PUSH-PULL ISO 5675 (female) FEMALE THREAD ASME B1.20.1 NPT

TYPE	DN	PN		ØA	C	Ød	ch	ØM	WEIGHT		ITEM CODE	
		MPa	42						mm	33,5		68
QC PP NV N 3/8 FEMALE	10	Psi	6090	inch	1,32	2,68	-	0,94	N3/8	lb	0,59	NC34N020001

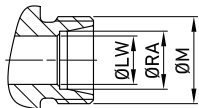
CS  
Carbon  
Steel



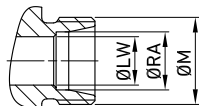
### QUICK COUPLINGS PUSH-PULL ISO 5675 (female) MALE THREAD METRIC ISO 8434-1-S (DIN 2353)

TYPE	DN	PN		ØA	C	Ød	ch	ØM	ØLW	ØRA	WEIGHT		ITEM CODE	
		MPa	42								mm	33,5		74,5
QC PP NV 8S FEMALE	10	Psi	6090	inch	1,32	2,93	-	0,94	M16X1,5	5	8	lb	0,76	NC34H020000
											0,20	0,31		
QC PP NV10S FEMALE	10	Psi	6090	inch	1,32	2,93	-	0,94	M18X1,5	7	10	kg	0,346	NC34H020001
											0,28	0,39	lb	

CS  
Carbon  
Steel


**QUICK COUPLINGS PUSH-PULL ISO 5675 (FEMALE)  
MALE THREAD METRIC ISO 8434-1-L (DIN 2353)**

TYPE	DN	PN	ØA	C	Ød	ch	ØM	ØLW	ØRA	WEIGHT	ITEM CODE
QC PP NV 6L FEMALE	10	MPa 42	mm 33,5	72,5	-	24	M12X1,5	4	6	kg 0,339	NC34L020000
		Psi 6090	inch 1,32	2,85	-	0,94		0,16	0,24	lb 0,75	
QC PP NV 8L FEMALE		MPa 42	mm 33,5	72,5	-	24	M14X1,5	6	8	kg 0,339	NC34L020001
		Psi 6090	inch 1,32	2,85	-	0,94		0,24	0,31	lb 0,75	
QC PP NV 10L FEMALE		MPa 42	mm 33,5	73,5	-	24	M16X1,5	8	10	kg 0,34	NC34L020002
		Psi 6090	inch 1,32	2,89	-	0,94		0,31	0,39	lb 0,75	

 CS  
Carbon  
Steel

**QUICK COUPLINGS PUSH-PULL ISO 5675 (FEMALE)  
MALE THREAD METRIC ISO 8434-1-L (DIN 2353) BULKHEAD**

TYPE	DN	PN	ØA	C	Ød	ch	ØM	ØLW	ØRA	WEIGHT	ITEM CODE
QC PP NV 8L BK FEMALE	10	MPa 42	mm 33,5	87,5	-	24	M14X1,5	6	8	kg 0,353	NC34M020000
		Psi 6090	inch 1,32	3,44	-	0,94		0,24	0,31	lb 0,78	
QC PP NV 10L BK FEMALE		MPa 42	mm 33,5	88,5	-	24	M16X1,5	8	10	kg 0,356	NC34M020001
		Psi 6090	inch 1,32	3,48	-	0,94		0,31	0,39	lb 0,78	

 CS  
Carbon  
Steel