



VB VUBA

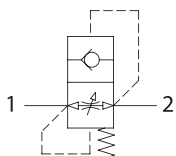
HOSE BREAK VALVE

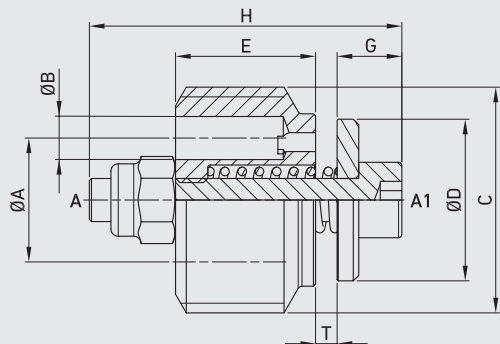
Edition. 21.0

CS Carbon Steel

- Type: hose break valve
- Sizes: from DN6 up to DN25
- Ends: BSP-NPT-SAE
- Pressure: up to PN350
- Temp range: from -20°C to +100°C
- Treatment: Galvanized

VBF Female insert
VBF Male insert




CODE DESCRIPTION STRUCTURE
VB G3/8 T0,5 F0,5

Type and way of valve

VB

Ends

 GAS DIN/
ISO 228
BSP

 G 1/4
G 3/8
G 1/2
G 3/4
G 1

Setting

0,25 > 4,25

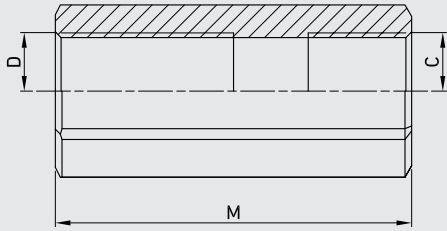
F (throttling hole*)

		ø min	ø max
VB G 1/4	mm	0,50	1,00
	inch	0,02	0,04
VB G 3/8	mm	0,50	1,25
	inch	0,02	0,05
VB G 1/2	mm	0,50	1,50
	inch	0,02	0,06
VB G 3/4	mm	0,50	2,50
	inch	0,02	0,10
VB G 1	mm	0,50	3,00
	inch	0,02	0,12

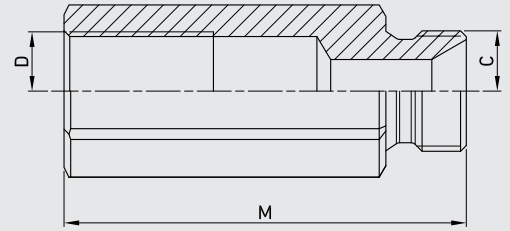
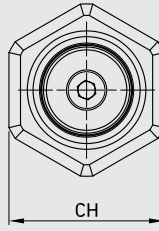
* omit if not requested

VB VALVE

TYPE	FLOW min-max l/min	ØA		ØB	C	ØD		E	G	H	WEIGHT	CS Carbon Steel	
		mm	inch			ITEM CODE							
VB G 1/4	8-25	mm	8,5	2,4	1/4	9,5	8	5,0	23	kg	0,0065	G540102A01AAPAA	
		inch	0,33	0,09		0,37	0,31	0,20	0,91				
VB G 3/8	16-50	mm	11	3,5	3/8	12,5	11	5,0	23	kg	0,0125	G540103A01AAPAA	
		inch	0,43	0,14		0,49	0,43	0,20	0,91				
VB G 1/2	25-80	mm	13	4,5	1/2	15,0	13	6,0	29	kg	0,0235	G540104A01AAPAA	
		inch	0,51	0,18		0,59	0,51	0,24	1,14				
VB G 3/4	50-150	mm	16	6	3/4	18,5	18	6,0	34	kg	0,0460	G540105A01AAPAA	
		inch	0,63	0,24		0,73	0,71	0,24	1,34				
VB G 1	70-200	mm	20	7	1	23,0	21	7,5	40	kg	0,0945	G540106A01AAPAA	
		inch	0,79	0,28		0,91	0,83	0,30	1,57				



VBF Female housing



VBM Male housing

VBF Female housing

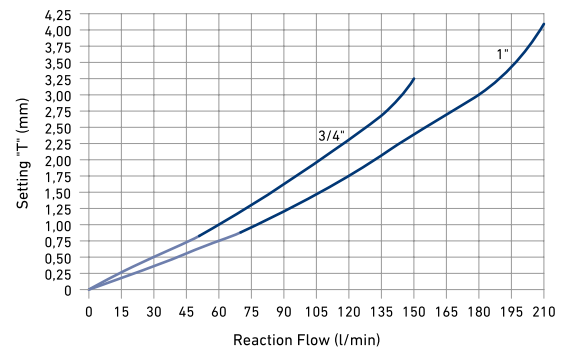
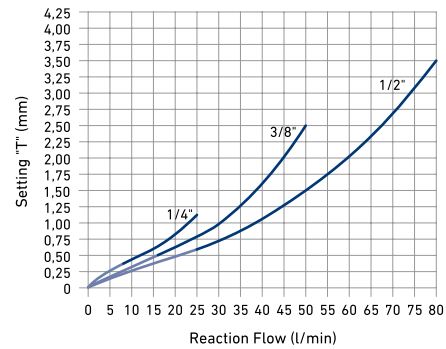
							CS Carbon Steel
TYPE	CS	C-D	B	M	WEIGHT	Q (L/1')	ITEM CODE
VBF G 1/4	1/4	G 1/4	mm 19	48	kg 0,01	28	C01AA03583A010Z
			inch 0,75	1,89	lb 0,02		
VBF G 3/8	3/8	G 3/8	mm 22	52	kg 0,01	50	C01AA03584A010Z
			inch 0,87	2,05	lb 0,02		
VBF G 1/2	1/2	G 1/2	mm 27	60	kg 0,02	85	C01AA03585A010Z
			inch 1,06	2,36	lb 0,04		
VBF G 3/4	3/4	G 3/4	mm 36	72	kg 0,05	150	C01AA03586A010Z
			inch 1,42	2,83	lb 0,11		
VBF G 1	1	G 1	mm 46	85	kg 0,09	180	C01AA03587A010Z
			inch 1,81	3,35	lb 0,20		

VBM Male housing

							CS Carbon Steel
TYPE	CS	C-D	B	M	WEIGHT	Q (L/1')	ITEM CODE
VBM G 1/4	1/4	G 1/4	mm 19	48	kg 0,01	28	C01AA03578A010Z
			inch 0,75	1,89	lb 0,02		
VBM G 3/8	3/8	G 3/8	mm 22	58	kg 0,01	50	C01AA03579A010Z
			inch 0,87	2,28	lb 0,02		
VBM G 1/2	1/2	G 1/2	mm 27	65	kg 0,02	85	C01AA03580A010Z
			inch 1,06	2,56	lb 0,04		
VBM G 3/4	3/4	G 3/4	mm 36	78	kg 0,05	150	C01AA03581A010Z
			inch 1,42	3,07	lb 0,11		
VBM G 1	1	G 1	mm 46	85	kg 0,09	180	C01AA03582A010Z
			inch 1,81	3,35	lb 0,20		

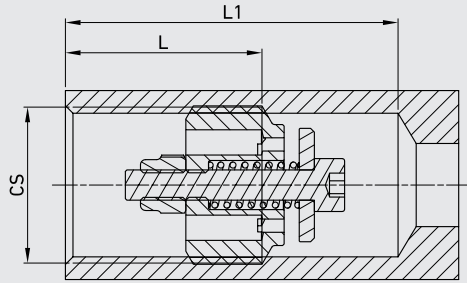
PRESSURE DROP CURVES

For actuator moved by directional control valve, the reaction flow has to be calculated multiply the nominal flow by 1.5 and by 2 for actuator moved by solenoid operated directional control valve. It is normal to set the reaction flow 1,5 times the rate flow of the system. If not required, the setting of "T" will be supplied at the maximum value.



Warning

the setting values indicated in this diagram are indicative, for any setting value of "T", the reaction flow can change by ±10 % and beyond based on the features of the equipment in which they are installed.


Applications

Screw in the valve connecting 1 to the pressure flow and 2 to the actuator. The use together with flow control valve is recommended.

VB + VBF Assembled (Female-Female)

TYPE	FLOW min-max l/min	MAX PRESSURE	T	CS	CAVITY		ITEM CODE	
					L	L1		
VB G 1/4	8-25	35 MPa 5075 PSI	see diagram	1/4	mm	24,2	35,2	G480202A0100PAA
					inch	0,95	1,39	
VB G 3/8	16-50	35 MPa 5075 PSI	see diagram	3/8	mm	26,2	37,1	G480203A0100PAA
					inch	1,03	1,46	
VB G 1/2	25-80	35 MPa 5075 PSI	see diagram	1/2	mm	30,3	45,2	G480204A0100PAA
					inch	1,19	1,78	
VB G 3/4	50-150	35 MPa 5075 PSI	see diagram	3/4	mm	38,1	54,2	G480205A0100PAA
					inch	1,50	2,13	
VB G 1	70-200	35 MPa 5075 PSI	see diagram	1	mm	46,2	66,1	G480206A0100PAA
					inch	1,82	2,60	

VB + VBM Assembled (Male-Female)

TYPE	FLOW min-max l/min	MAX PRESSURE	T	CS	CAVITY		ITEM CODE	
					L	L1		
VB G 1/4	8-25	35 MPa 5075 PSI	see diagram	1/4	mm	24,2	35,2	G580302A0100PAA
					inch	0,95	1,39	
VB G 3/8	16-50	35 MPa 5075 PSI	see diagram	3/8	mm	26,2	37,1	G580303A0100PAA
					inch	1,03	1,46	
VB G 1/2	25-80	35 MPa 5075 PSI	see diagram	1/2	mm	30,3	45,2	G580304A0100PAA
					inch	1,19	1,78	
VB G 3/4	50-150	35 MPa 5075 PSI	see diagram	3/4	mm	38,1	54,2	G580305A0100PAA
					inch	1,50	2,13	
VB G 1	70-200	35 MPa 5075 PSI	see diagram	1	mm	46,2	66,1	G580306A0100PAA
					inch	1,82	2,60	