



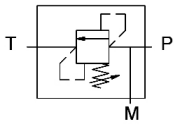
# VRM

## RELIEF VALVE IN MANIFOLD WITH MANOMETER PORT

Edition. 21.3

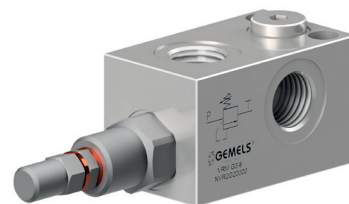
### CS Carbon Steel

- Type: Relief Valve in Manifold with Manometer Port
- Sizes: DN10-DN13-DN20
- Ends: BSP-NPT-SAE
- Pressure: up to PN350
- Temp range: from -20°C to +80°C
- Treatment: Galvanized



## STRUCTURE

Type and way of valve	Ends			Material
	GAS DIN/ ISO 228 BSP	NPT ANSI /ASME B1.20.1	SAE J1926-1	
VRM	G 3/8 G 1/2 G 3/4	N 3/8 N 1/2 N 3/4	SAE6 SAE8 SAE12	CS CARBON STEEL

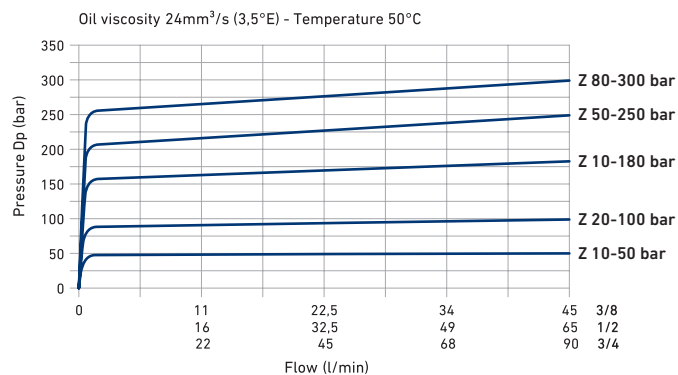


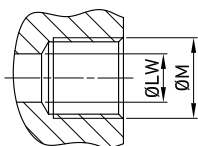
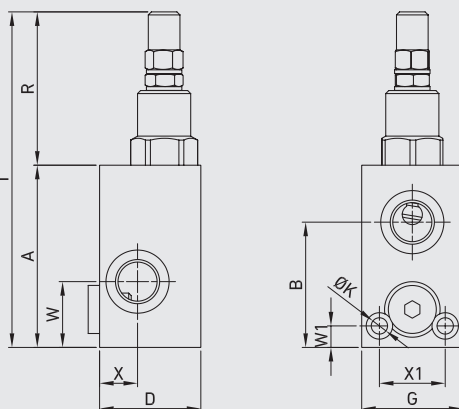
## FEATURES

MAX. FLOW (L/MIN)	FLUID VISCOSITY	FILTRATION	FLUID TEMPERATURE	AMBIENT TEMPERATURE	STANDARD SEALS	SEALS MATERIAL	SETTING RANGE	STANDARD SETTING	ADJUSTMENT
45 (DN10)	ISO 3448	ISO4406	-20°C/80°C	-20°C/50°C	NBR 70 Shore A	NBR 70 Shore A	10-180	90	Screw with steel cap Tamper resistant cap* Handknob and locknut*
70 (DN13)						Viton*	10-50*	30*	
90 (DN20)							20-100* 50-250* 80-300*	70* 130* 150*	

\*On request

## PERFORMANCES



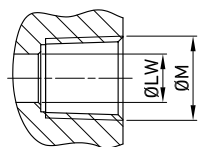


VRM DIN/ISO 228 BSP

CS

Carbon Steel

TYPE	DN	PN	A	B	D	G	I	R	ØM	ØK	W	W1	X	X1	WEIGHT	ITEM CODE
VRM G 3/8	10	MPa 35	mm 72	49,5	40	40	134	62	G 1/4	6,5	26	8,5	15	26	kg 0,8	NVR2G020000
		Psi 5075	inch 2,83	1,95	1,57	1,57	5,28	2,44		0,26	1,02	0,33	0,59	1,02	lb 1,76	
VRM G 1/2	13	MPa 35	mm 77	54	45	45	139	62	G 3/8	6,5	29,5	8,5	17,5	30	kg 1	NVR2G030000
		Psi 5075	inch 3,03	2,13	1,77	1,77	5,47	2,44		0,26	1,16	0,33	0,69	1,18	lb 2,20	
VRM G 3/4	20	MPa 35	mm 92	68	50	50	154	62	G 1/2	6,5	35	10	20	32	kg 1,5	NVR2G040000
		Psi 5075	inch 3,62	2,68	1,97	1,97	6,06	2,44		0,26	1,38	0,39	0,79	1,26	lb 3,31	

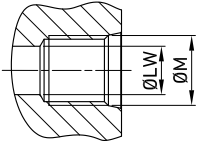


VRM ANSI/ASME B1.20.1 NPT

CS

Carbon Steel

TYPE	DN	PN	A	B	D	G	I	R	ØM	ØK	W	W1	X	X1	WEIGHT	ITEM CODE
VRM N 3/8	10	MPa 35	mm 72	49,5	40	40	134	62	N 1/4	6,5	26	8,5	15	26	kg 0,8	NVR2N020000
		Psi 5075	inch 2,83	1,95	1,57	1,57	5,28	2,44		0,26	1,02	0,33	0,59	1,02	lb 1,76	
VRM N 1/2	13	MPa 35	mm 77	54	45	45	139	62	N 3/8	6,5	29,5	8,5	17,5	30	kg 1	NVR2N030000
		Psi 5075	inch 3,03	2,13	1,77	1,77	5,47	2,44		0,26	1,16	0,33	0,69	1,18	lb 2,20	
VRM N 3/4	20	MPa 35	mm 92	68	50	50	154	62	N 1/2	6,5	35	10	20	32	kg 1,5	NVR2N040000
		Psi 5075	inch 3,62	2,68	1,97	1,97	6,06	2,44		0,26	1,38	0,39	0,79	1,26	lb 3,31	


**VRM SAE J1926-1**

																	CS Carbon Steel		
TYPE	DN	PN		A	B	D	G	I	R	ØM	ØK	W	W1	X	X1	WEIGHT	ITEM CODE		
VRM SAE 6	10	MPa	35	mm	72	49,5	40	40	134	62	7/16 UNF	6,5	26	8,5	15	26	kg	0,8	NVR2S020000
		Psi	5075	inch	2,83	1,95	1,57	1,57	5,28	2,44		0,26	1,02	0,33	0,59	1,02	lb	1,76	
VRM SAE 8	13	MPa	35	mm	77	54	45	45	139	62	9/16 UNF	6,5	29,5	8,5	17,5	30	kg	1	NVR2S030000
		Psi	5075	inch	3,03	2,13	1,77	1,77	5,47	2,44		0,26	1,16	0,33	0,69	1,18	lb	2,20	
VRM SAE 12	20	MPa	35	mm	92	68	50	50	154	62	3/4 UNF	6,5	35	10	20	32	kg	1,5	NVR2S040000
		Psi	5075	inch	3,62	2,68	1,97	1,97	6,06	2,44		0,26	1,38	0,39	0,79	1,26	lb	3,31	