



# NV

ISO 5675 - WITH POPPET

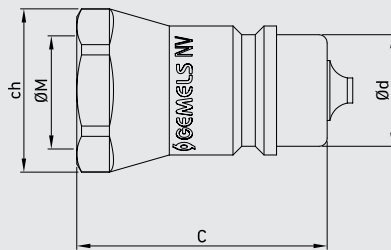
Interchangeable size 1/2" with ISO 7241/A

Edition. 21.3

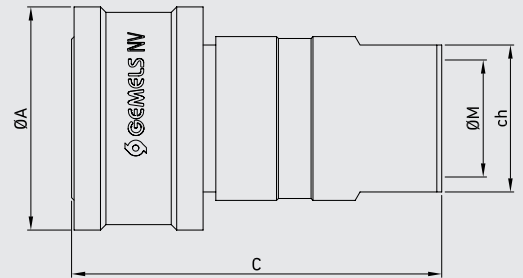
## CS Carbon Steel

- Type: Quick Couplings
- Models: ISO 5675
- Sizes: from DN6 to DN25
- Pressure: up to PN350
- Treatment: Galvanized

Male



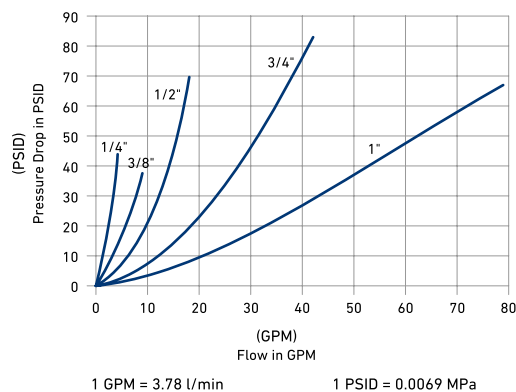
Female



Available also in patented version: ball valve with integrated quick coupling.

### Performance

(1/4", 3/8", 1/2", 3/4", 1")  
 Series (1/4", 3/8", 1/2", 3/4", 1")  
 200SUS (Test Fluid: Oil-200SUS)





### CODE DESCRIPTION STRUCTURE

QC	1/2	M/F	DN12,5	1	B
----	-----	-----	--------	---	---

**Type of coupling**

ISO 5675 NV

**Ends**

ISO 1179-1	ASME B1.20.1
BSPP	NPT
G 1/4	N 1/4
G 3/8	N 3/8
G 1/2	N 1/2
G 3/4	N 3/4
G 1	N 1

MALE

FEMALE

**DN/ISO**

- 6,3
- 10
- 12,5
- 20
- 25

**Body Material**

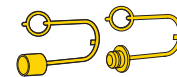
- 1 = 1,0737

**Seal material**

B = NBR E = FKM\*

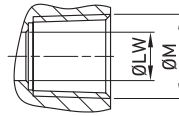
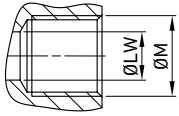
\*On request

- Plugs
- Cups



Available colours:

- Blue
- Yellow
- Red
- Green



**QUICK COUPLINGS ISO 5675  
(male / female)  
FEMALE THREAD ISO 1179-1  
BSPP WITH POPPET**

										CS Carbon Steel										
TYPE	DN	PN	ØA	C	Ød	ch	ØM	WEIGHT	ITEM CODE											
QC NV G 1/4 MALE	6,3	MPa 35	mm -	36	14,2	19	G 1/4	kg 0,043	NC09G010000											
		Psi 5075	inch -	1,42	0,56	0,75		lb 0,09												
QC NV G 1/4 FEMALE	6,3	MPa 35	mm 27,6	55,5	-	22	G 1/4	kg 0,128	NC10G010000											
		Psi 5075	inch 1,09	2,19	-	0,87		lb 0,28												
QC NV G 3/8 MALE	10	MPa 35	mm -	40	19	24	G 3/8	kg 0,075	NC09G020000											
		Psi 5075	inch -	1,57	0,75	0,94		lb 0,17												
QC NV G 3/8 FEMALE	10	MPa 35	mm 34	60,5	-	24	G 3/8	kg 0,2	NC10G020000											
		Psi 5075	inch 1,34	2,38	-	0,94		lb 0,44												
QC NV G 1/2 MALE	12,5	MPa 35	mm -	46	20,5	27	G 1/2	kg 0,085	NC09G030000											
		Psi 5075	inch -	1,81	0,81	1,06		lb 0,19												
QC NV G 1/2 FEMALE	12,5	MPa 35	mm 38	68	-	27	G 1/2	kg 0,27	NC10G030000											
		Psi 5075	inch 1,50	2,68	-	1,06		lb 0,60												
QC NV G 3/4 MALE	20	MPa 25	mm -	53,5	28	34	G 3/4	kg 0,174	NC09G040000											
		Psi 3625	inch -	2,11	1,10	1,34		lb 0,38												
QC NV G 3/4 FEMALE	20	MPa 25	mm 48,2	82,5	-	34	G 3/4	kg 0,515	NC10G040000											
		Psi 3625	inch 1,90	3,25	-	1,34		lb 1,14												
QC NV G 1 MALE	25	MPa 25	mm -	64	31,3	41	G 1	kg 0,258	NC09G050000											
		Psi 3625	inch -	2,52	1,23	1,61		lb 0,57												
QC NV G 1 FEMALE	25	MPa 25	mm 56,2	97,5	-	41	G 1	kg 0,936	NC10G050000											
		Psi 3625	inch 2,21	3,84	-	1,61		lb 2,06												

**QUICK COUPLINGS ISO 5675  
(male / female)  
FEMALE THREAD ASME B1.20.1  
NPT WITH POPPET**

										CS Carbon Steel										
TYPE	DN	PN	ØA	C	Ød	ch	ØM	WEIGHT	ITEM CODE											
QC NV N 1/4 MALE	6,3	MPa 35	mm -	36	14,2	19	NPT	kg 0,044	NC09N010000											
		Psi 5075	inch -	1,42	0,56	0,75		1/4		lb 0,10										
QC NV N 1/4 FEMALE	6,3	MPa 35	mm 27,6	55,5	-	22	NPT	kg 0,13	NC10N010000											
		Psi 5075	inch 1,09	2,19	-	0,87		1/4		lb 0,29										
QC NV N 3/8 MALE	10	MPa 35	mm -	40	19	24	NPT	kg 0,08	NC09N020000											
		Psi 5075	inch -	1,57	0,75	0,94		3/8		lb 0,18										
QC NV N 3/8 FEMALE	10	MPa 35	mm 34	60,5	-	24	NPT	kg 0,2	NC10N020000											
		Psi 5075	inch 1,34	2,38	-	0,94		3/8		lb 0,44										
QC NV N 1/2 MALE	12,5	MPa 35	mm -	46	20,5	27	NPT	kg 0,09	NC09N030000											
		Psi 5075	inch -	1,81	0,81	1,06		1/2		lb 0,20										
QC NV N 1/2 FEMALE	12,5	MPa 35	mm 38	68	-	27	NPT	kg 0,27	NC10N030000											
		Psi 5075	inch 1,50	2,68	-	1,06		1/2		lb 0,60										
QC NV N 3/4 MALE	20	MPa 25	mm -	53,5	28	34	NPT	kg 0,09	NC09N040000											
		Psi 3625	inch -	2,11	1,10	1,34		3/4		lb 0,20										
QC NV N 3/4 FEMALE	20	MPa 25	mm 48,2	82,5	-	34	NPT	kg 0,29	NC10N040000											
		Psi 3625	inch 1,90	3,25	-	1,34		3/4		lb 0,64										
QC NV N 1 MALE	25	MPa 25	mm -	64	31,3	41	NPT 1	kg 0,1	NC09N050000											
		Psi 3625	inch -	2,52	1,23	1,61		1		lb 0,22										
QC NV N 1 FEMALE	25	MPa 25	mm 56,2	97,5	-	41	NPT 1	kg 0,3	NC10N050000											
		Psi 3625	inch 2,21	3,84	-	1,61		1		lb 0,66										