



DV

ISO 7241/A - WITH POPPET WITH DECOMPRESSION VALVE

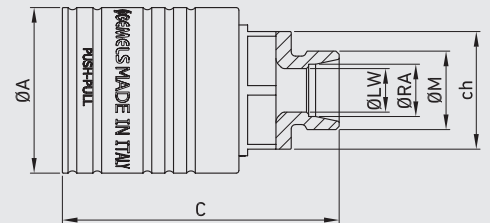
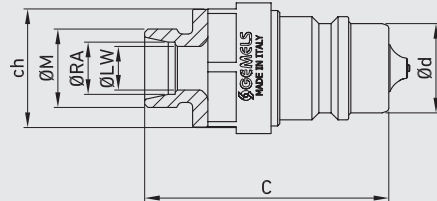
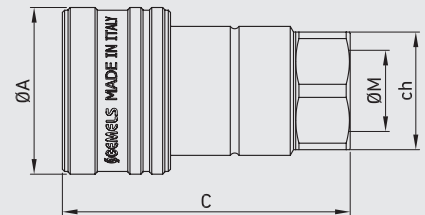
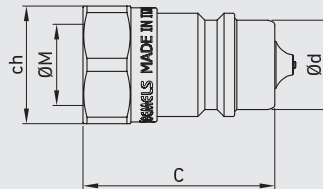
Edition. 21.0

CS Carbon Steel

- Type: Quick Couplings
- Models: ISO 7241/A
- Sizes: from DN13 up to DN20
- Pressure: up to PN350
- Treatment: Galvanized

Male

Female





CODE DESCRIPTION STRUCTURE

QC 1/2 1M/F DN12,5 1 B

Type of coupling

DV

Ends

ISO 1179-1 BSPP	ISO A		PUSH-PULL			
	ASME B1.20.1 NPT	ISO 11926-1 (SAE J1926-1) ORB	ISO 8434-1-S (DIN 2353)	ISO 8434-1-L (DIN 2353)	ISO 8434-1-S (DIN 2353) BULKHEAD	ISO 8434-1-L (DIN 2353) BULKHEAD
G 1/2	N 1/2	SAE 8	12S	10L	10S	10L
G 3/4	N 3/4	SAE12	16S	12L	12S	12L
			20S	15L	16S	15L
				18L		18L
				22L		22L

MALE

FEMALE

DN/ISO

12,5

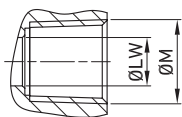
20

Body Material

● 1 = 1,0737

Seal material

B = NBR E = FKM*

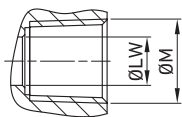


*Push-Pull design on request

**QUICK COUPLINGS ISO 7241/A WITH POPPET WITH DECOMPRESSION VALVE (male / female)
FEMALE THREAD ISO 1179-1 BSPP
Interchangeable according to ISO 7241-A**

TYPE	DN	PN	ØA	C	Ød	ch	ØM	WEIGHT	ITEM CODE	
QC DV G 1/2 MALE	12,5	MPa 35	mm -	44	20,5	27	G1/2	kg 0,0924	NC23G030000	
		Psi 5075	inch -	1,73	0,81	1,06		lb 0,20		
QC DV G 1/2 FEMALE		MPa 35	mm 38,25	66	-	27	G1/2	kg 0,227		NC24G030000
		Psi 5075	inch 1,51	2,60	-	1,06		lb 0,50		
QC DV G 3/4 MALE	20	MPa 25	mm -	55,5	29,1	34	G3/4	kg 0,2	NC23G040000	
		Psi 3625	inch -	2,19	1,15	1,34		lb 0,44		
QC DV G 3/4 FEMALE		MPa 25	mm 48	83	-	34	G3/4	kg 0,49		NC24G040000
		Psi 3625	inch 1,89	3,27	-	1,34		lb 1,08		

CS
Carbon
Steel

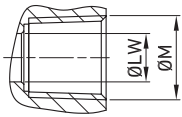


*Push-Pull design on request

**QUICK COUPLINGS ISO 7241/A WITH POPPET WITH DECOMPRESSION VALVE (male / female)
FEMALE THREAD ASME B1.20.1 NPT
Interchangeable according to ISO 7241-A**

TYPE	DN	PN	ØA	C	Ød	ch	ØM	WEIGHT	ITEM CODE	
QC DV N 1/2 MALE	12,5	MPa 35	mm -	44	20,5	27	N1/2	kg 0,0924	NC23N030000	
		Psi 5075	inch -	1,73	0,81	1,06		lb 0,20		
QC DV N 1/2 FEMALE		MPa 35	mm 38,25	66	-	27	N1/2	kg 0,227		NC24N030000
		Psi 5075	inch 1,51	2,60	-	1,06		lb 0,50		
QC DV N 3/4 MALE	20	MPa 25	mm -	55,5	29,1	34	N3/4	kg 0,2	NC23N040000	
		Psi 3625	inch -	2,19	1,15	1,34		lb 0,44		
QC DV N 3/4 FEMALE		MPa 25	mm 48	83	-	34	N3/4	kg 0,49		NC24N040000
		Psi 3625	inch 1,89	3,27	-	1,34		lb 1,08		

CS
Carbon
Steel

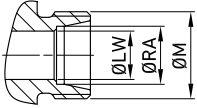


***Push-Pull design on request**

**QUICK COUPLINGS ISO 7241/A
WITH POPPET WITH DECOMPRESSION VALVE (male / female)
FEMALE THREAD ISO 11926-1 (SAE J1926-1) ORB
Interchangeable according to ISO 7241-A**

CS
Carbon
Steel

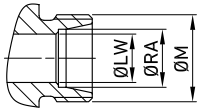
TYPE	DN	PN	$\varnothing A$	C	$\varnothing d$	ch	$\varnothing M$	WEIGHT	ITEM CODE
QC DV SAE8 MALE	12,5	MPa 35	mm -	44	20,5	27	SAE8	kg 0,0924	NC23S030000
		Psi 5075	inch -	1,73	0,81	1,06		lb 0,20	
QC DV SAE8 FEMALE		MPa 35	mm 38,25	66	-	27	SAE8	kg 0,227	NC24S030000
		Psi 5075	inch 1,51	2,60	-	1,06		lb 0,50	
QC DV SAE12 MALE	20	MPa 25	mm -	55,5	29,1	34	SAE12	kg 0,2	NC23S040000
		Psi 3625	inch -	2,19	1,15	1,34		lb 0,44	
QC DV SAE12 FEMALE		MPa 25	mm 48	83	-	34	SAE12	kg 0,49	NC24S040000
		Psi 3625	inch 1,89	3,27	-	1,34		lb 1,08	



**QUICK COUPLINGS PUSH-PULL
WITH DECOMPRESSION VALVE (male / female)
MALE THREAD METRIC ISO 8434-1-S (DIN 2353)
Interchangeable according to ISO 7241-A**

CS
Carbon
Steel

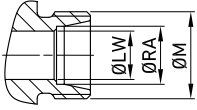
TYPE	DN	PN	ØA	C	Ød	ch	ØM	ØLW	ØRA	WEIGHT	ITEM CODE
QC DV 12S MALE	12,5	MPa 35	mm -	57	20,5	27	M20X1,5	8	12	kg 0,135	NC23H030000
		Psi 5075	inch 0-00	2,24	0,81	1,06		0,31	0,47	lb 0,30	
QC DV 12S FEMALE		MPa 35	mm 38	64,5	-	27	M20X1,5	8	12	kg 0,28	NC24H030000
		Psi 5075	inch 1,50	2,54	-	1,06		0,31	0,47	lb 0,62	
QC DV 16S MALE		MPa 35	mm -	59	20,5	27	M24X1,5	12	16	kg 0,157	NC23H030001
		Psi 5075	inch -	2,32	0,81	1,06		0,47	0,63	lb 0,35	
QC DV 16S FEMALE		MPa 35	mm 38	66,5	-	27	M24X1,5	12	16	kg 0,284	NC24H030001
		Psi 5075	inch 1,50	2,62	-	1,06		0,47	0,63	lb 0,63	
QC DV 16S MALE	20	MPa 25	mm -	64	29	34	M24X1,5	12	16	kg 0,251	NC23H040000
		Psi 3625	inch -	2,52	1,14	1,34		0,47	0,63	lb 0,55	
QC DV 16S FEMALE		MPa 25	mm 47	79,5	-	34	M24X1,5	12	16	kg 0,51	NC24H040000
		Psi 3625	inch 1,85	3,13	-	1,34		0,47	0,63	lb 1,12	
QC DV 20S MALE		MPa 25	mm -	66	29	34	M30X2	16	20	kg 0,26	NC23H040001
		Psi 3625	inch -	2,60	1,14	1,34		0,63	0,79	lb 0,57	
QC DV 20S FEMALE		MPa 25	mm 47	81,5	-	34	M30X2	16	20	kg 0,53	NC24H040001
		Psi 3625	inch 1,85	3,21	-	1,34		0,63	0,79	lb 1,17	



**QUICK COUPLINGS PUSH-PULL
WITH DECOMPRESSION VALVE (male / female)
MALE THREAD METRIC ISO 8434-1-L (DIN 2353)
Interchangeable according to ISO 7241-A**

CS
Carbon
Steel

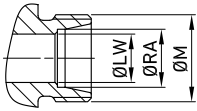
TYPE	DN	PN	ØA	C	Ød	ch	ØM	ØLW	ØRA	WEIGHT	ITEM CODE
QC DV 10L MALE	12,5	MPa 35	mm -	56	20,5	27	M16X1,5	8	10	kg 0,16	NC23L030000
		Psi 5075	inch -	2,20	0,81	1,06		0,31	0,39	lb 0,35	
QC DV 10L FEMALE		MPa 35	mm 38	63,5	-	27	M16X1,5	8	10	kg 0,24	NC24L030000
		Psi 5075	inch 1,50	2,50	-	1,06		0,31	0,39	lb 0,53	
QC DV 12L MALE		MPa 35	mm -	56	20,5	27	M18X1,5	10	12	kg 0,169	NC23L030001
		Psi 5075	inch -	2,20	0,81	1,06		0,39	0,47	lb 0,37	
QC DV 12L FEMALE		MPa 35	mm 38	63,5	-	27	M18X1,5	10	12	kg 0,254	NC24L030001
		Psi 5075	inch 1,50	2,50	-	1,06		0,39	0,47	lb 0,56	
QC DV 15L MALE		MPa 35	mm -	57	20,5	27	M22X1,5	12	15	kg 0,17	NC23L030002
		Psi 5075	inch -	2,24	0,81	1,06		0,47	0,59	lb 0,37	
QC DV 15L FEMALE		MPa 35	mm 38	64,5	-	27	M22X1,5	12	15	kg 0,26	NC24L030002
		Psi 5075	inch 1,50	2,54	-	1,06		0,47	0,59	lb 0,57	
QC DV 18L MALE	MPa 35	mm -	57	20,5	27	M26X1,5	15	18	kg 0,179	NC23L030003	
	Psi 5075	inch -	2,24	0,81	1,06		0,59	0,71	lb 0,39		
QC DV 18L FEMALE	MPa 35	mm 38	64,5	-	27	M26X1,5	15	18	kg 0,263	NC24L030003	
	Psi 5075	inch 1,50	2,54	-	1,06		0,59	0,71	lb 0,58		
QC DV 18L MALE	20	MPa 25	mm -	62	29,1	34	M26X1,5	15	18	kg 0,25	NC23L040000
		Psi 3625	inch -	2,44	1,15	1,34		0,59	0,71	lb 0,55	
QC DV 18L FEMALE		MPa 25	mm 47	77,5	-	34	M26X1,5	15	18	kg 0,52	NC24L040000
		Psi 3625	inch 1,85	3,05	-	1,34		0,59	0,71	lb 1,15	
QC DV 22L MALE		MPa 25	mm -	64	29,1	34	M30X2	19	22	kg 0,27	NC23L040001
		Psi 3625	inch -	2,52	1,15	1,34		0,75	0,87	lb 0,60	
QC DV 22L FEMALE		MPa 25	mm 47	79,5	-	34	M30X2	19	22	kg 0,55	NC24L040001
		Psi 3625	inch 1,85	3,13	-	1,34		0,75	0,87	lb 1,21	



**QUICK COUPLINGS PUSH-PULL
WITH DECOMPRESSION VALVE (male / female)
MALE THREAD METRIC ISO 8434-1-S (DIN 2353) BULKHEAD**
Interchangeable according to ISO 7241-A

CS
Carbon
Steel

TYPE	DN	PN	ØA	C	Ød	ch	ØM	ØLW	ØRA	WEIGHT	ITEM CODE
QC DV 10S BK MALE	12,5	MPa 35	mm -	72	20,5	27	M18X1,5	7	10	kg 0,169	NC23I030000
		Psi 5075	inch -	2,83	0,81	1,06		0,28	0,39	lb 0,37	
QC DV 10S BK FEMALE		MPa 35	mm 38	79,5	-	27	M18X1,5	7	10	kg 0,3	NC24I030000
		Psi 5075	inch 1,50	3,13	-	1,06		0,28	0,39	lb 0,66	
QC DV 12S BK MALE	12,5	MPa 35	mm -	72	20,5	27	M20X1,5	8	12	kg 0,16	NC23I030001
		Psi 5075	inch -	2,83	0,81	1,06		0,31	0,47	lb 0,35	
QC DV 12S BK FEMALE		MPa 35	mm 38	79,5	-	27	M20X1,5	8	12	kg 0,32	NC24I030001
		Psi 5075	inch 1,50	3,13	-	1,06		0,31	0,47	lb 0,71	
QC DV 16S BK MALE	20	MPa 25	mm -	79	29,1	34	M24X1,5	12	16	kg 0,27	NC23I040000
		Psi 3625	inch -	3,11	1,15	1,34		0,47	0,63	lb 0,60	
QC DV 16S BK FEMALE		MPa 25	mm 47	94,5	-	34	M24X1,5	12	16	kg 0,57	NC24I040000
		Psi 3625	inch 1,85	3,72	-	1,34		0,47	0,63	lb 1,26	



**QUICK COUPLINGS PUSH-PULL
WITH DECOMPRESSION VALVE (male / female)
MALE THREAD METRIC ISO 8434-1-L (DIN 2353) BULKHEAD**
Interchangeable according to ISO 7241-A

CS
Carbon
Steel

TYPE	DN	PN	ØA	C	Ød	ch	ØM	ØLW	ØRA	WEIGHT	ITEM CODE	
QC DV 10L BK MALE	12,5	MPa 35	mm	71	20,5	27	M16X1,5	8	10	kg 0,149	NC23M030000	
		Psi 5075	inch	0,00	2,80	0,81		1,06	0,31	0,39		lb 0,33
QC DV 10L BK FEMALE		MPa 35	mm	38	78,5		27	M16X1,5	8	10	kg 0,3	NC24M030000
		Psi 5075	inch	1,50	3,09	0,00	1,06		0,31	0,39	lb 0,66	
QC DV 12L BK MALE		MPa 35	mm	72	20,5	27	M18X1,5	10	12	kg 0,15	NC23M030001	
		Psi 5075	inch	0,00	2,83	0,81		1,06	0,39	0,47		lb 0,33
QC DV 12L BK FEMALE		MPa 35	mm	38	79,5		27	M18X1,5	10	12	kg 0,3	NC24M030001
		Psi 5075	inch	1,50	3,13	0,00	1,06		0,39	0,47	lb 0,66	
QC DV 15L BK MALE		MPa 35	mm	72	20,5	27	M22X1,5	12	15	kg 0,16	NC23M030002	
		Psi 5075	inch	0,00	2,83	0,81		1,06	0,47	0,59		lb 0,35
QC DV 15L BK FEMALE		MPa 35	mm	38	79,5		27	M22X1,5	12	15	kg 0,31	NC24M030002
		Psi 5075	inch	1,50	3,13	0,00	1,06		0,47	0,59	lb 0,68	
QC DV 18L BK MALE	MPa 35	mm	72	20,5	27	M26X1,5	15	18	kg 0,175	NC23M030003		
	Psi 5075	inch	0,00	2,83	0,81		1,06	0,59	0,71		lb 0,39	
QC DV 18L BK FEMALE	MPa 35	mm	38	79,5		27	M26X1,5	15	18	kg 0,33	NC24M030003	
	Psi 5075	inch	1,50	3,13	0,00	1,06		0,59	0,71	lb 0,73		
QC DV 15L BK MALE	20	MPa 25	mm	77	29,1	34	M22X1,5	12	15	kg 0,252	NC23M040000	
		Psi 3625	inch	0,00	3,03	1,15		1,34	0,47	0,59		lb 0,56
QC DV 15L BK FEMALE		MPa 25	mm	47	92,5		34	M22X1,5	12	15	kg 0,55	NC24M040000
		Psi 3625	inch	1,85	3,64	0,00	1,34		0,47	0,59	lb 1,21	
QC DV 22L BK MALE		MPa 25	mm	84	29,1	34	M30X2	19	22	kg 0,298	NC23M040001	
		Psi 3625	inch	0,00	3,31	1,15		1,34	0,75	0,87		lb 0,66
QC DV 22L BK FEMALE		MPa 25	mm	47	99,5		34	M30X2	19	22	kg 0,6	NC24M040001
		Psi 3625	inch	1,85	3,92	0,00	1,34		0,75	0,87	lb 1,32	